



# History and context of immigration in the Ninth Federal Reserve District

**Allison Liuzzi**

Wilder Research, Minnesota Compass

November 13, 2018



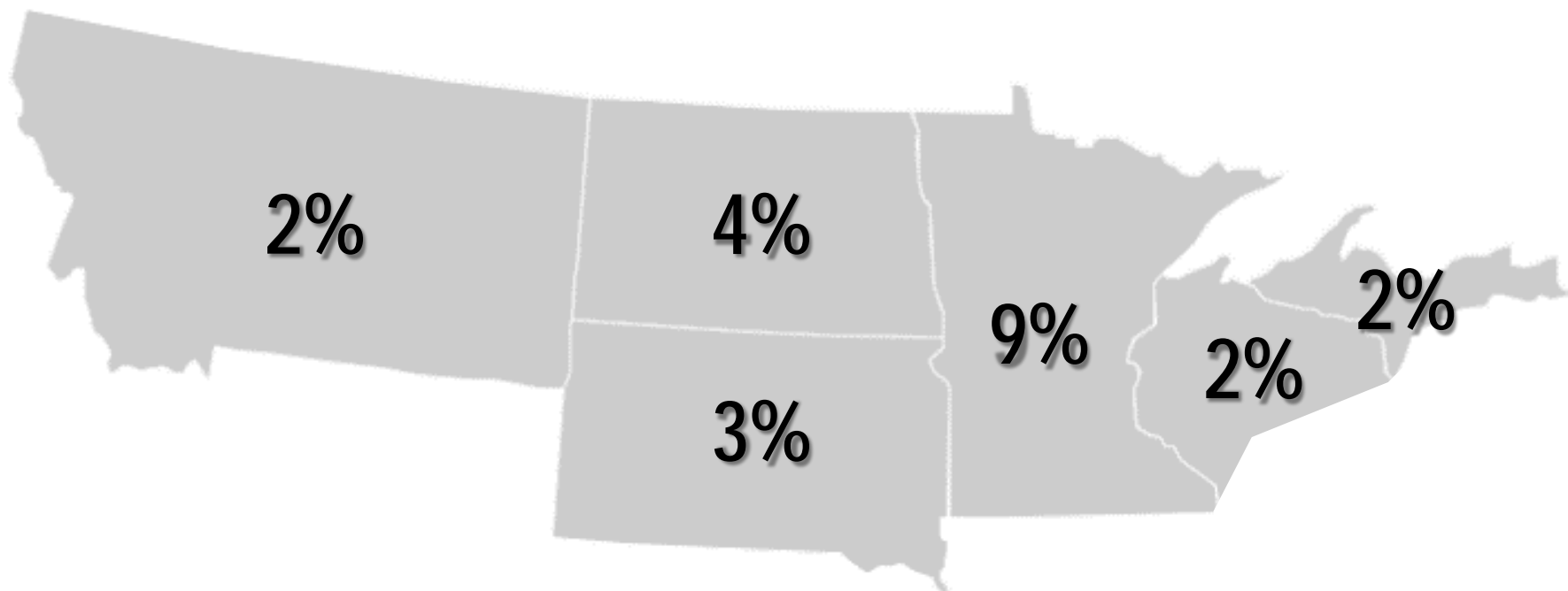
Immigration will  
**continue to**  
**shape**  
our communities for  
generations to come.



Our communities  
have long been  
shaped by  
**immigration.**

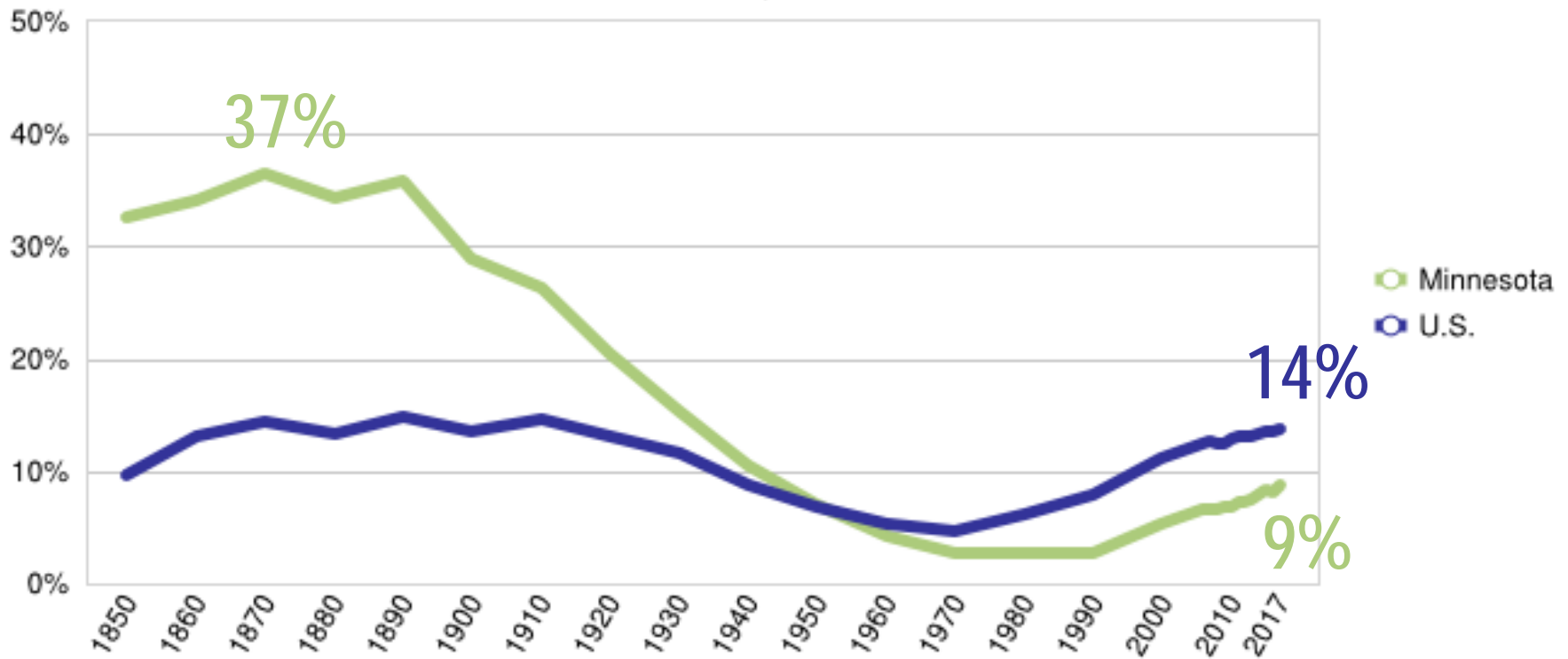
Nationwide,  
**14%** of our population is foreign-born.

In the Ninth Federal Reserve District,

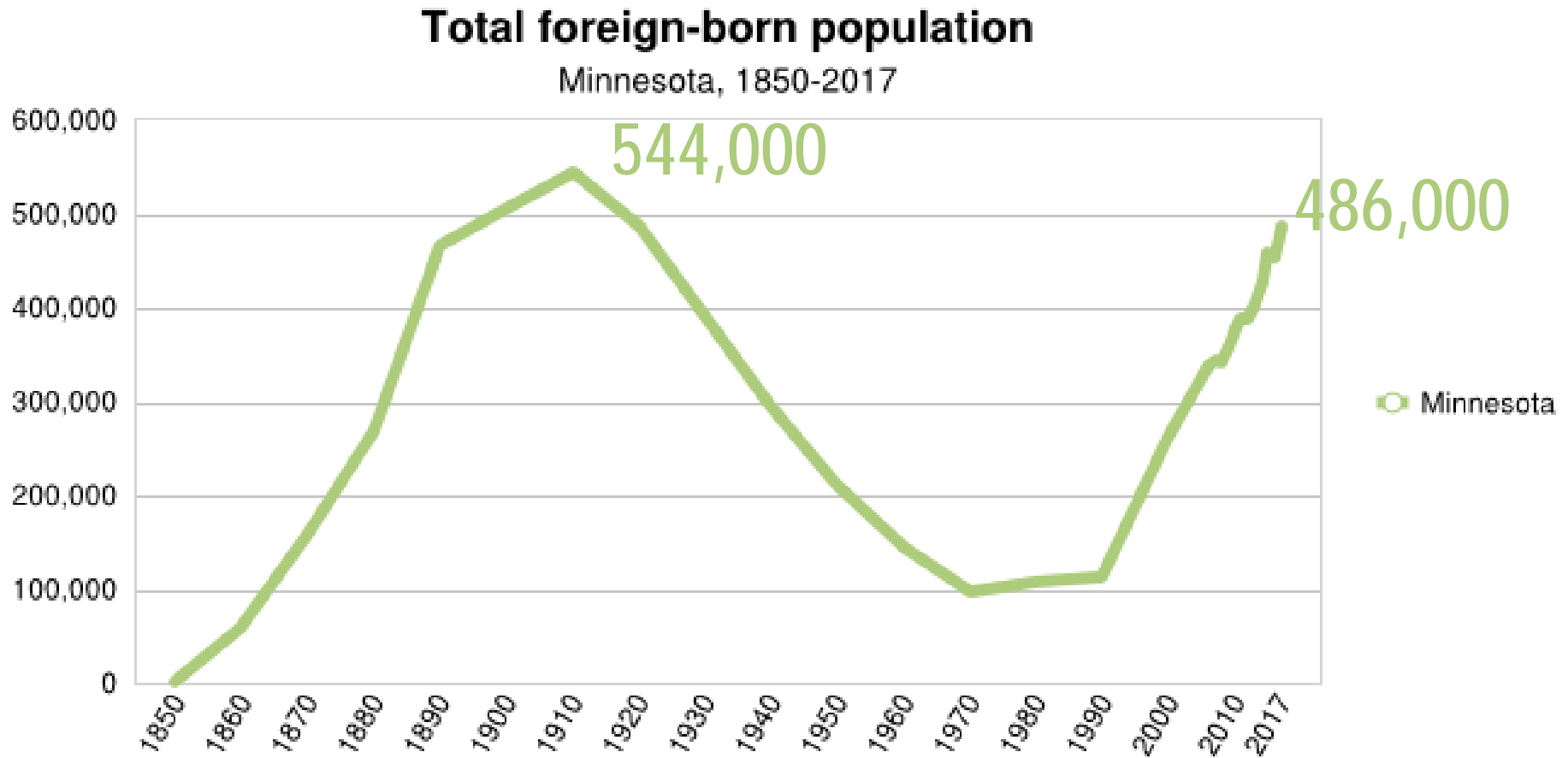


# As many as 1 in 3 Minnesota residents were foreign-born in the late 1800s

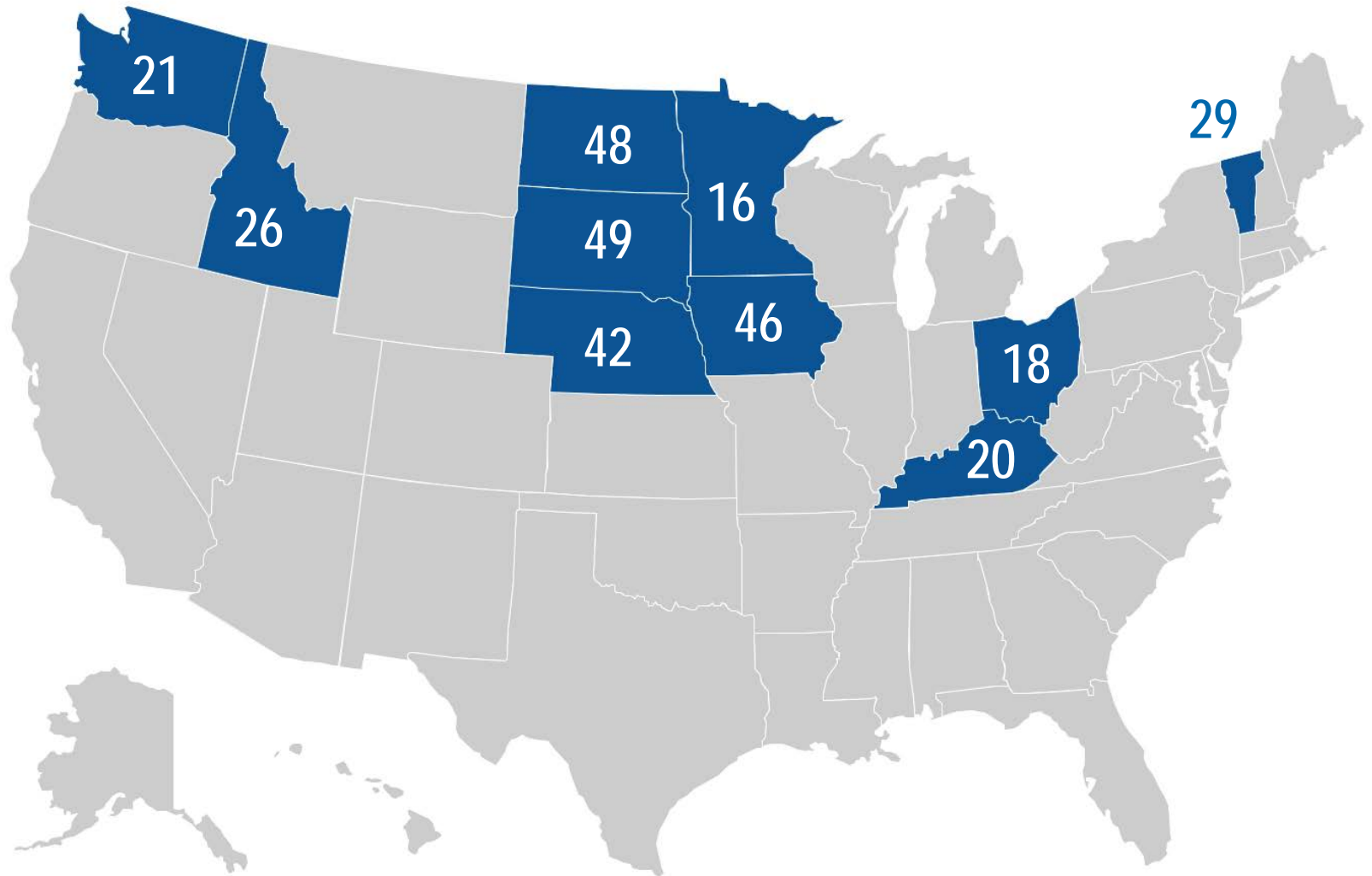
**Percent foreign born**  
Minnesota and U.S., 1850-2017



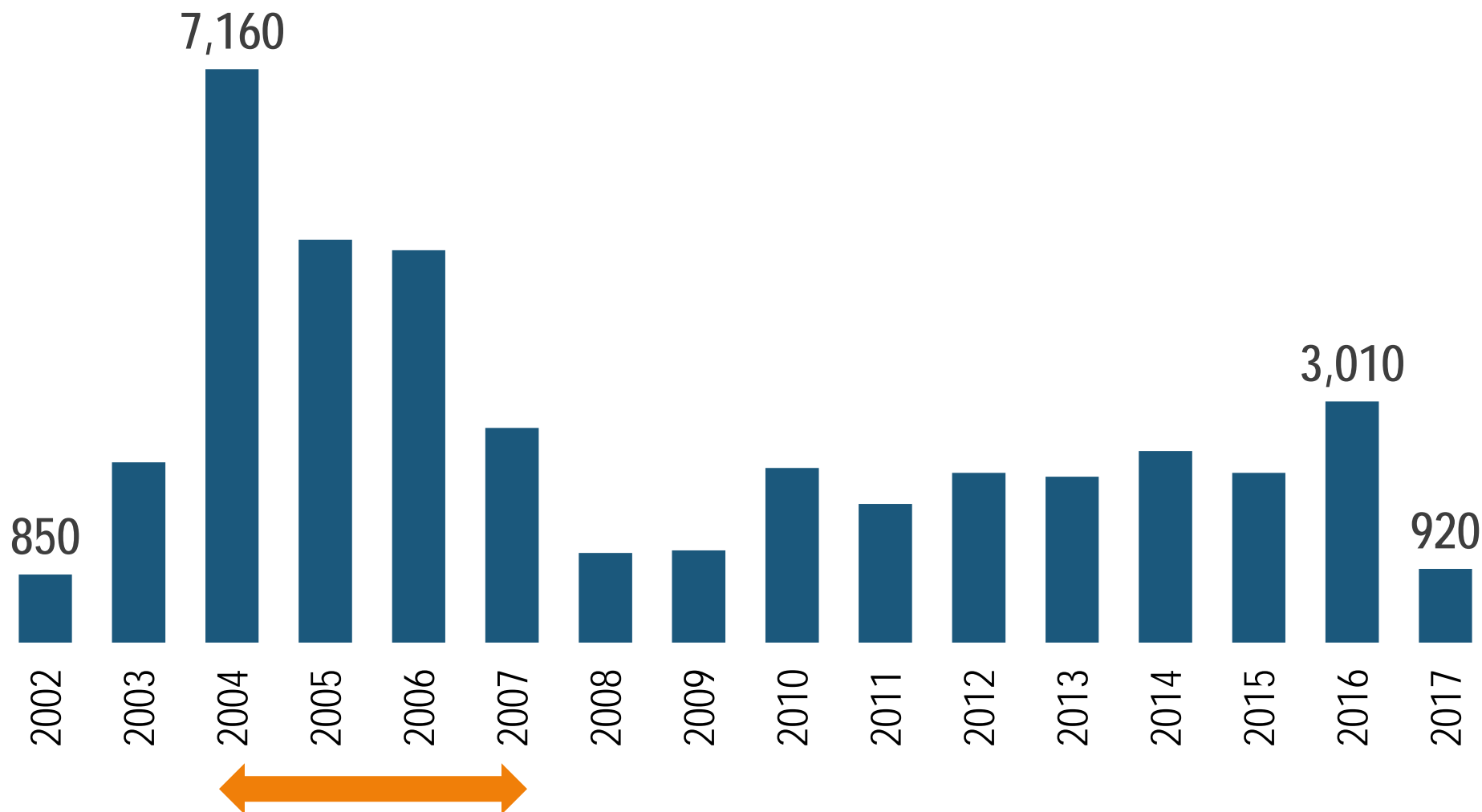
# Numerically, Minnesota's foreign-born population is approaching another peak



# MN, ND, SD among the top ten states for primary refugee arrivals per 100,000 residents



# Primary refugee arrivals in Minnesota



Among **top 5** states for primary refugee arrivals

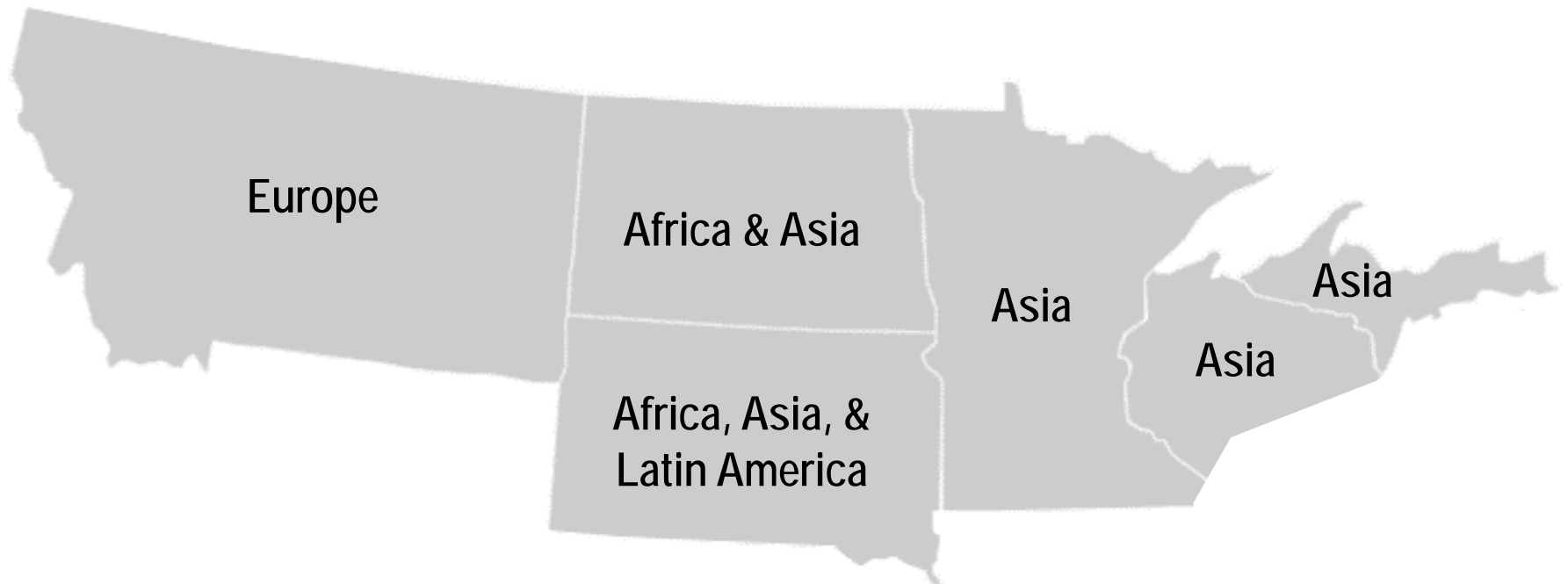




Our foreign-born  
population is  
**unique.**

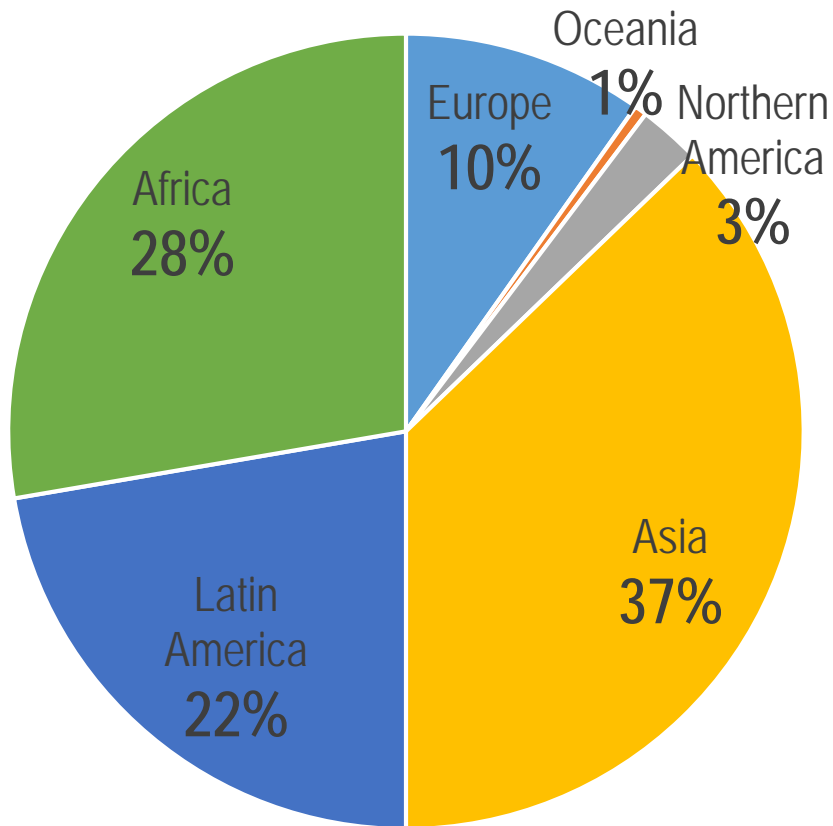
Nationwide, the largest share of our foreign-born population is from **Latin America**.

In the Ninth Federal Reserve District,

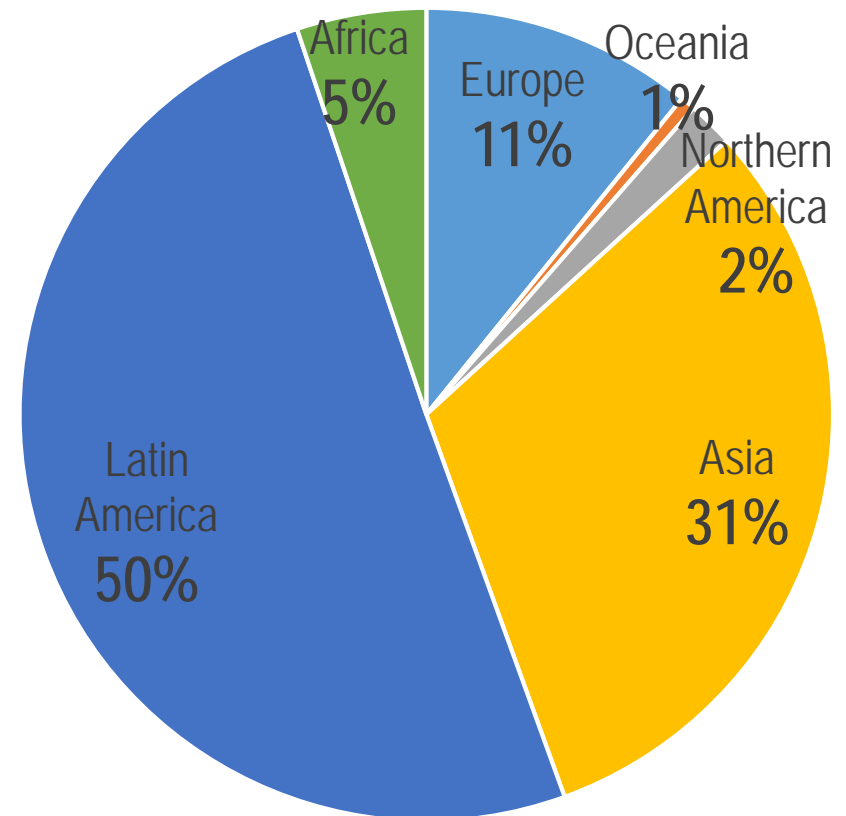


# Our foreign born population is different from the U.S. as a whole

Minnesota

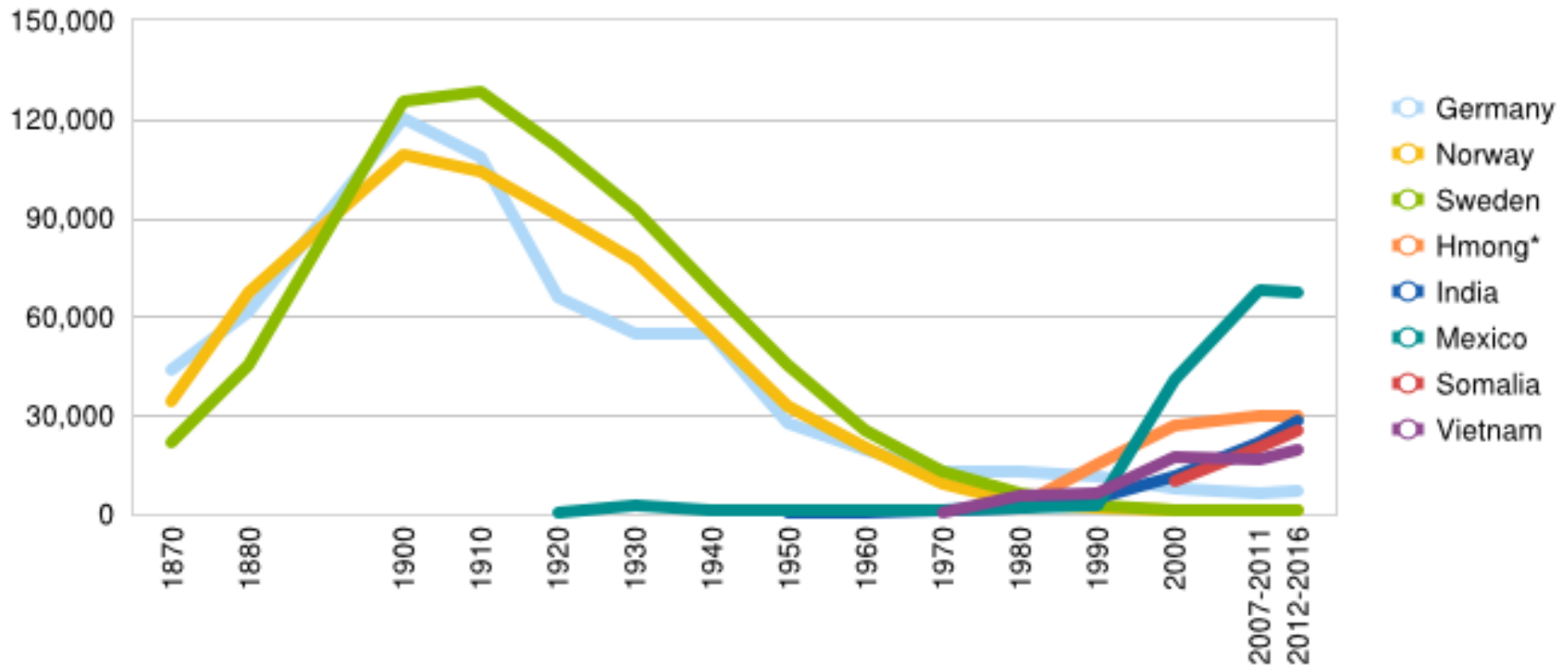


United States



# Origins of our foreign-born population have changed over time

**Foreign born population by birthplace**  
Minnesota, 1870-2016





**Quality of life**  
outcomes  
look different  
across our unique  
foreign-born  
populations.

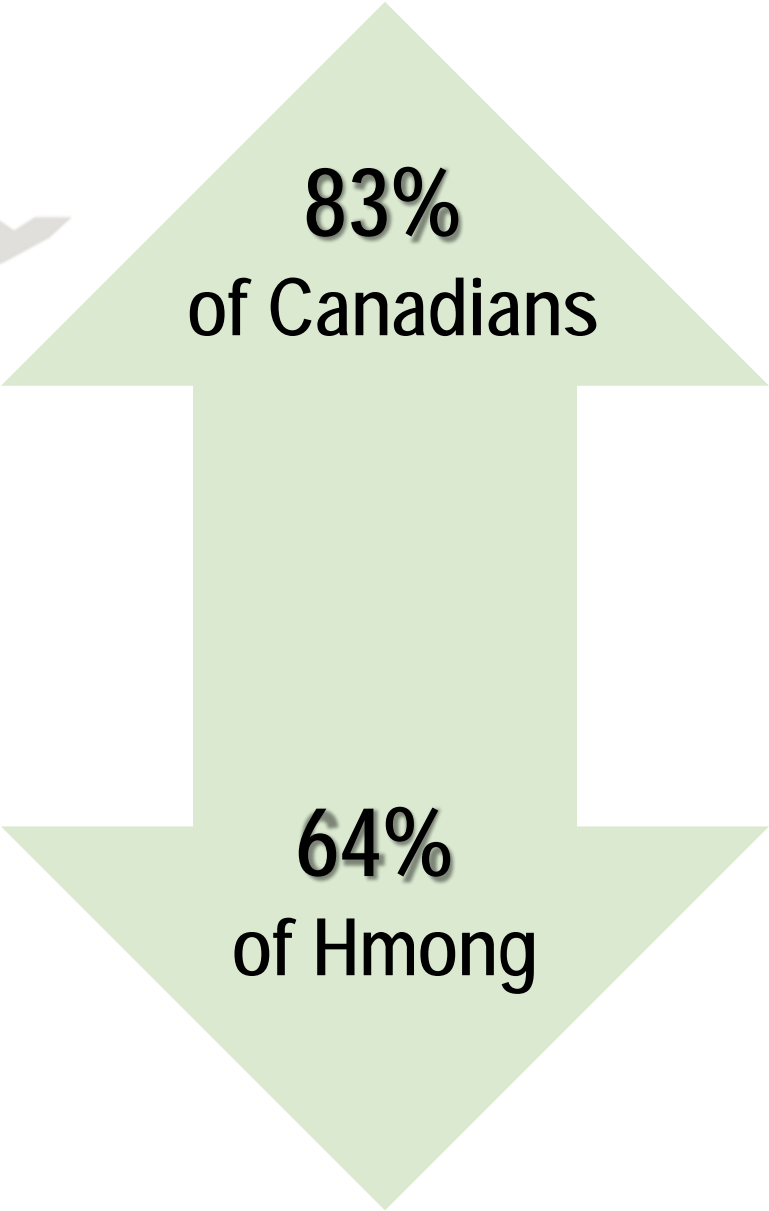


77%

of all adults  
are working

73%

of foreign-born  
adults



83%  
of Canadians

64%  
of Hmong



10%

of all Minnesotans  
are below poverty

18%

of foreign-born  
Minnesotans

43%  
of Somali

3%  
of Indians



The infographic features a light gray map of Minnesota on the left. To its right is a large green double-headed vertical arrow. The text is arranged as follows: '\$68,400' in green, 'median household income for all Minnesotans' in black, '\$55,100' in blue, 'foreign-born households' in black, '\$110,600' in black, 'Indian households' in black, '\$20,600' in black, and 'Somali households' in black. A decorative bar with various colored squares is at the bottom, and a Twitter logo with the handle '@MNCompass' is in the bottom right corner.

**\$68,400**

median household  
income for  
all Minnesotans

**\$55,100**

foreign-born  
households

**\$110,600**

Indian  
households

**\$20,600**

Somali  
households





72%

homeownership  
rate among  
all Minnesotans

47%

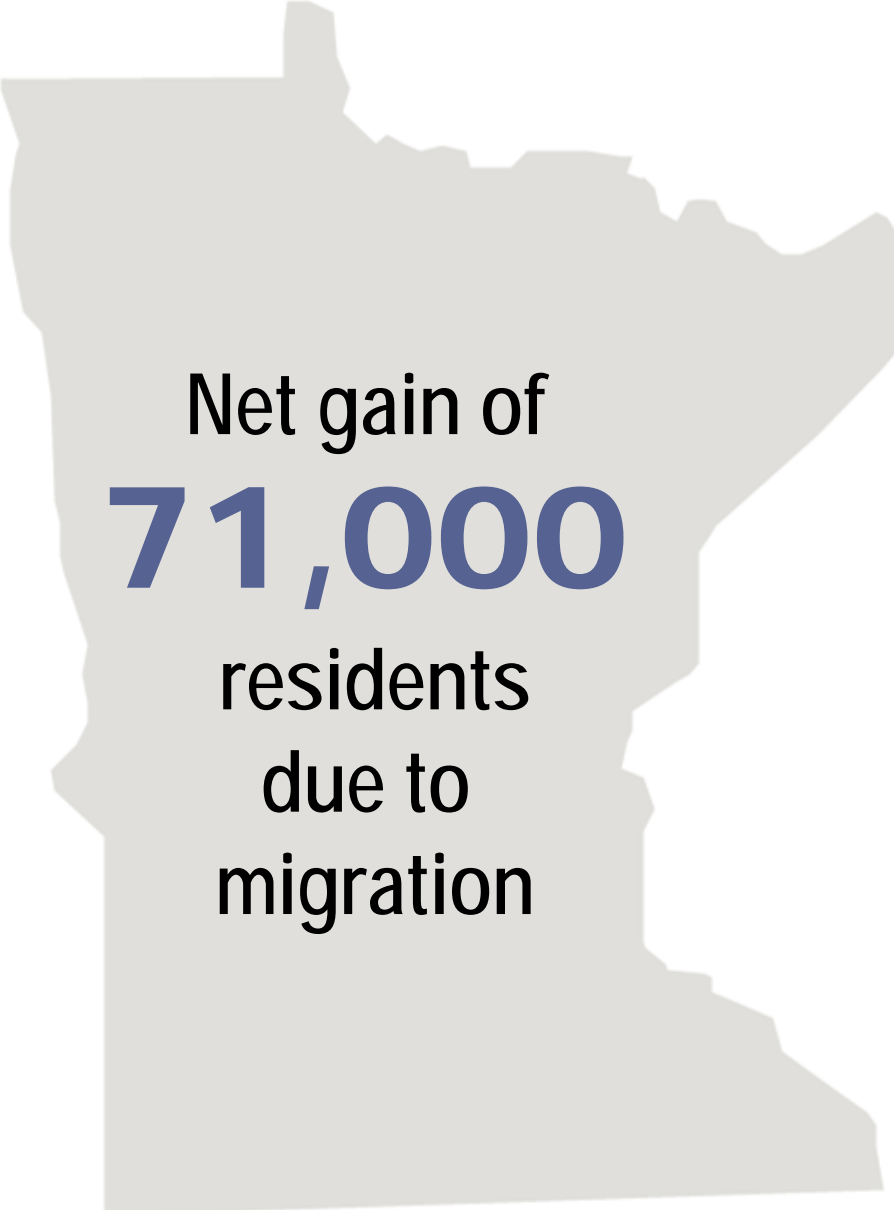
among  
foreign-born  
households

79%  
among  
Vietnamese

10%  
among  
Somali



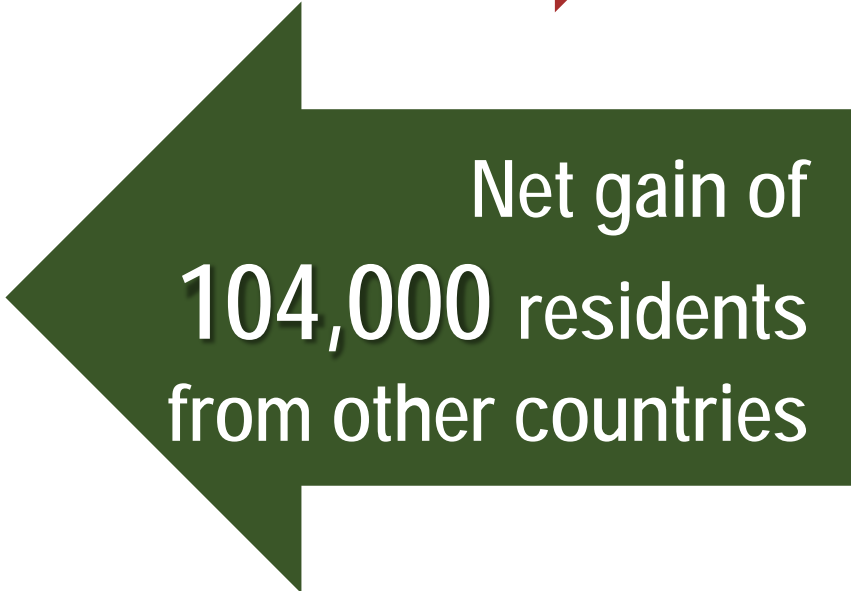
Immigration will  
**continue to**  
**shape**  
our communities for  
generations to come.



Net gain of  
**71,000**  
residents  
due to  
migration



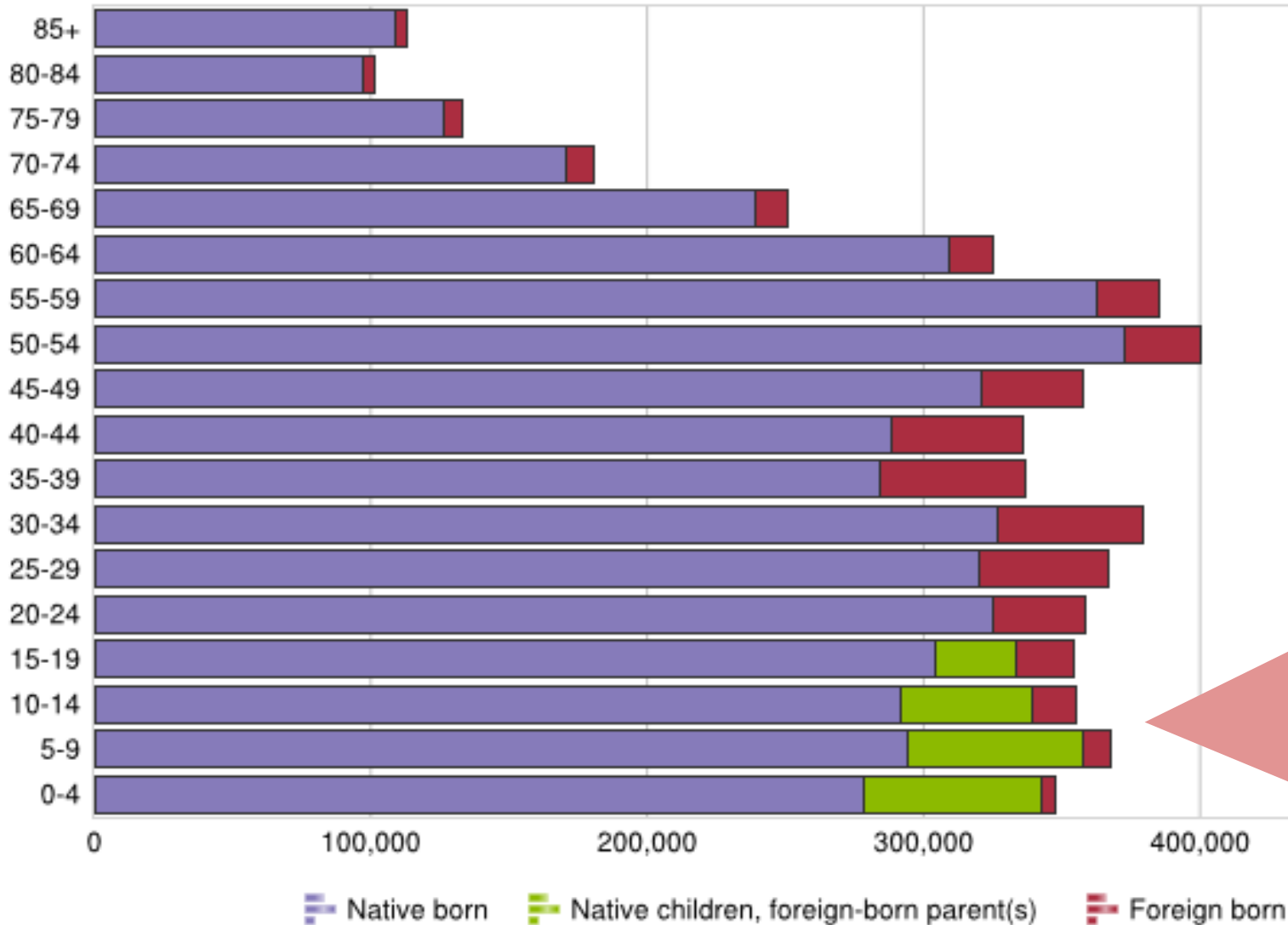
Net loss of  
**33,000** residents  
to other states



Net gain of  
**104,000** residents  
from other countries

# Population by age and nativity

Minnesota, 2012-2016



1 in 6  
kids in  
Minnesota  
is a child  
of an  
immigrant

# Thank you! Questions?



allison.liuzzi@wilder.org



Sign up for our monthly e-newsletter  
at [www.mncompass.org](http://www.mncompass.org)



Follow us on Twitter  
**@MNCompass @AllisonLiuzzi**



Connect with MN Compass on Facebook