



# Economic Empowerment in Pediatric Primary Care

Michael K. Hole, MD, MBA<sup>1</sup>; Lucy E. Marcil, MD, MPH<sup>1</sup>; Larissa Wenren, BA<sup>2</sup>; Barry Zuckerman, MD<sup>2</sup>; Robert J. Vinci, MD<sup>2</sup>

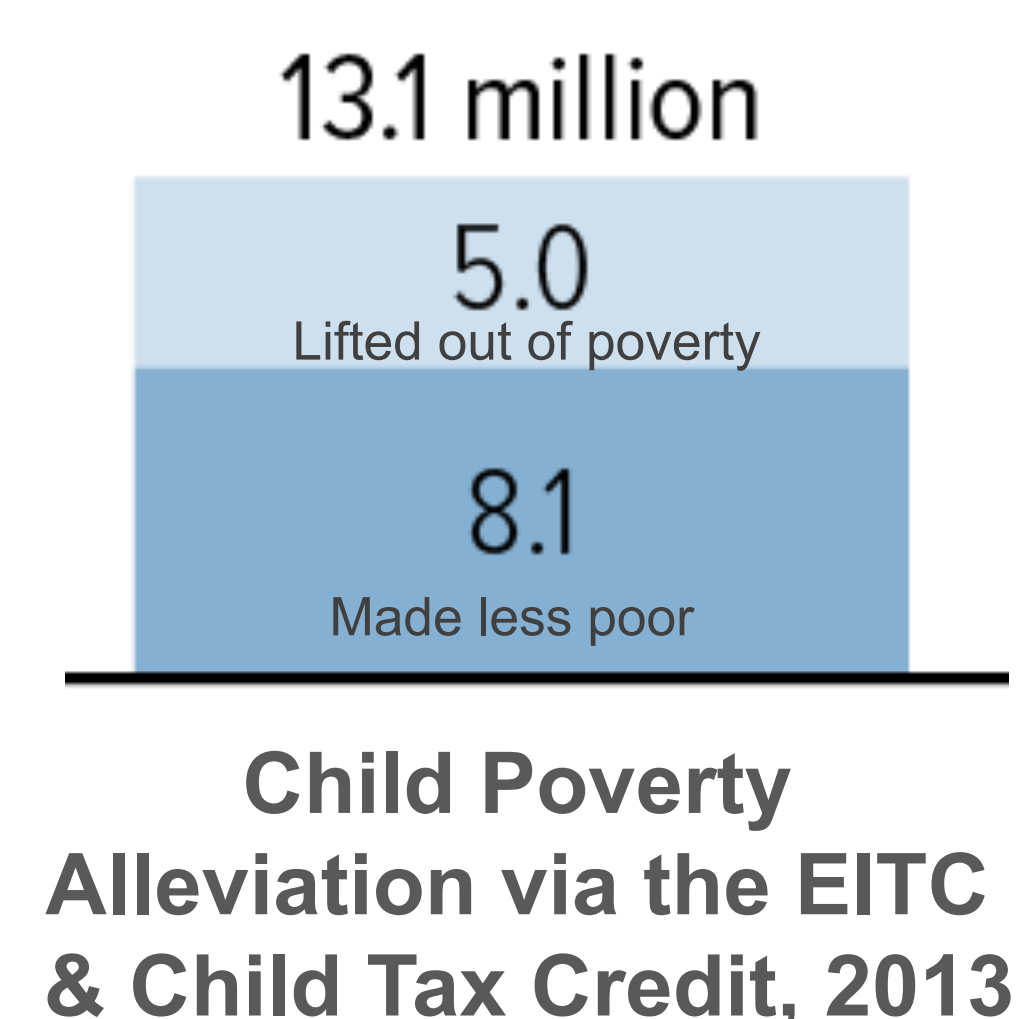
<sup>1</sup> Departments of Pediatrics and Medicine, Boston Medical Center and Boston Children's Hospital, Boston, Massachusetts  
<sup>2</sup> Department of Pediatrics, Boston Medical Center, Boston University School of Medicine, Boston, Massachusetts

## BACKGROUND

- **Child poverty in the US:** 20% of our nation's children, or 16 million, live in poverty.

- **Earned Income Tax Credit (EITC):** Federal & state monies for low-income, working Americans.

- The EITC improves the following:
  - Maternal & infant health
  - Educational achievement
  - Future adulthood earnings



- **20%** of EITC-eligible households do not claim their credit

## AIM

To improve the health & well-being of America's children by helping vulnerable families in the United States build assets & access evidence-based, anti-poverty government programs. ([www.mystreetcred.org](http://www.mystreetcred.org))

## METHODS

### Pilot:

- Occurred during the 2016 tax season at Boston Medical Center, New England's largest urban catchment hospital
- Partnered with the Boston Tax Help Coalition, an umbrella organization for the IRS Volunteer Income Tax Assistance (VITA) Program
- Certified volunteers & staff provided free tax preparation to families at Boston Medical Center's Pediatrics Clinic
- Total cost to implement: \$19k (\$18k in salary expenses)

### Program evaluation:

- Assessed program efficacy, feasibility, & acceptability
- Surveyed participants (clients), non-participants (patient families who declined), & clinic staff

## RESULTS

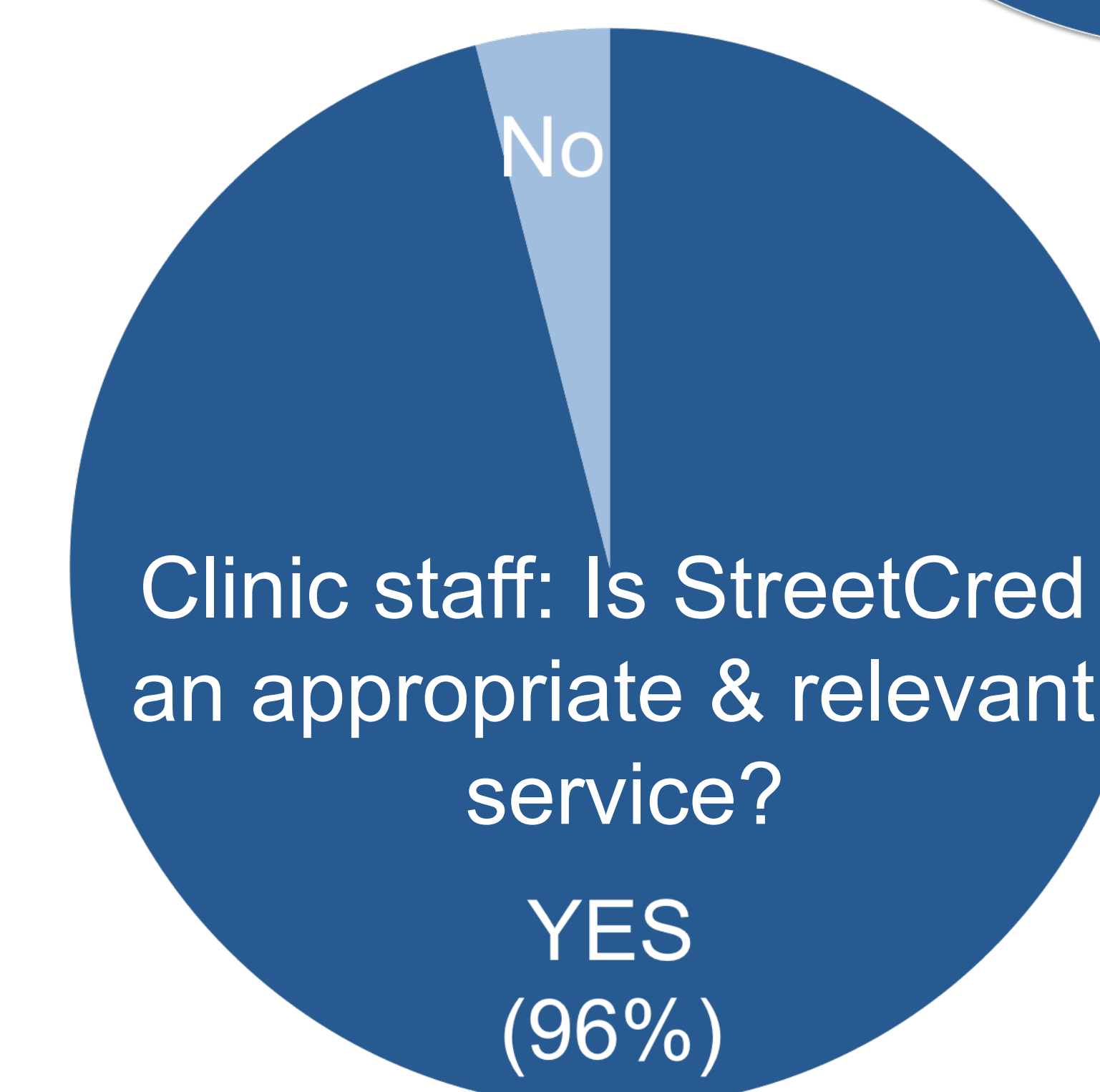
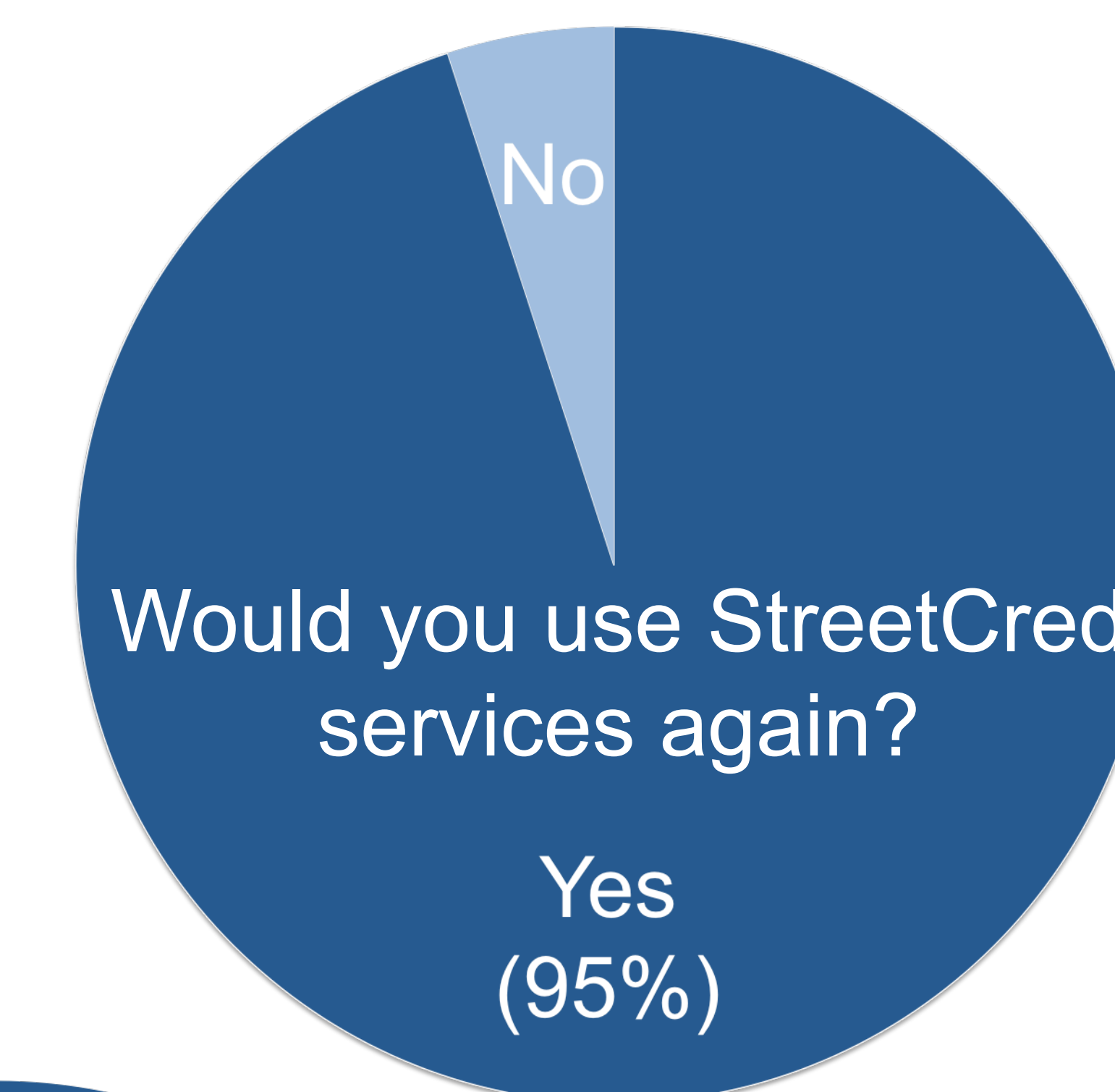
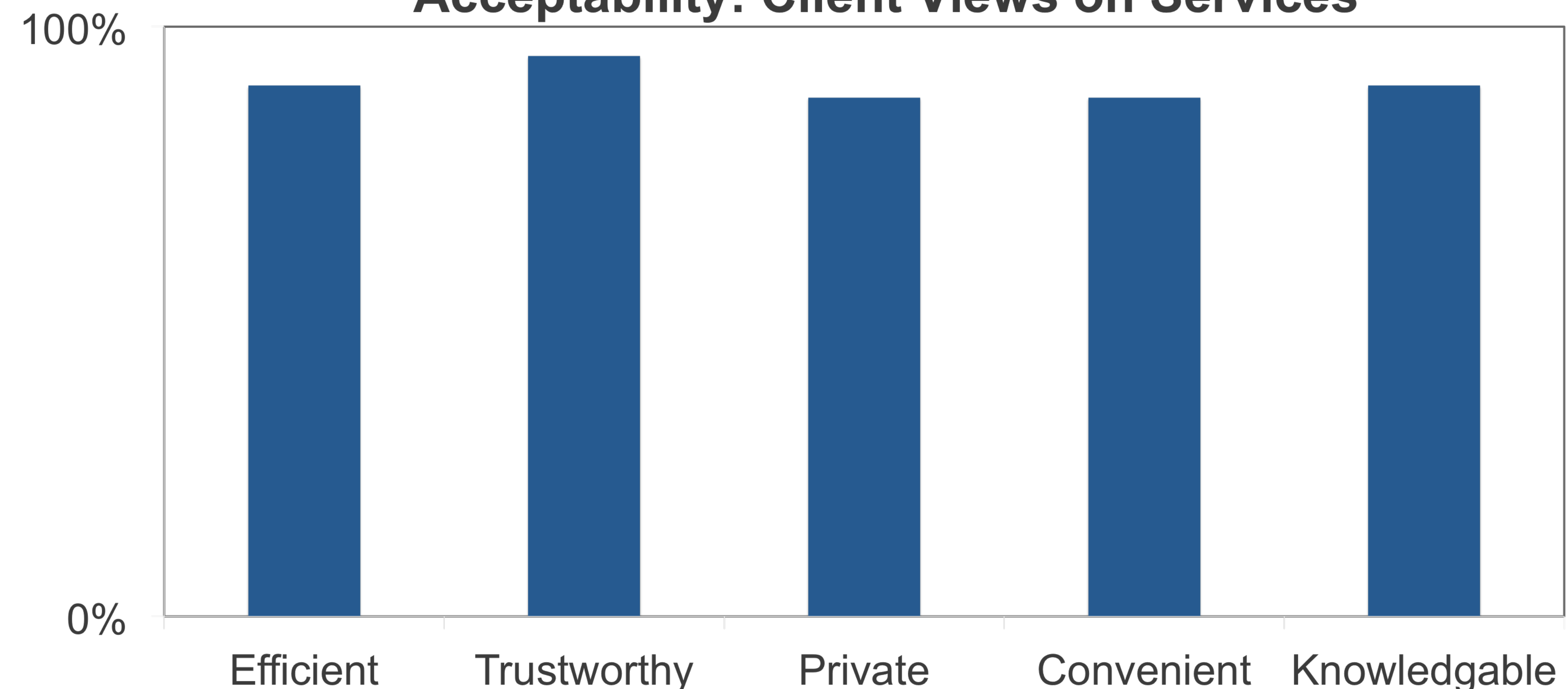
### Efficacy: Increasing Money Returned to Families

Total tax monies returned in 2016 tax season	\$401,275
EITC returned in 2016 tax season	\$96,209
Amount returned for every \$1 spent	\$21
Clients new to free tax services	55%
Clients who paid for tax services in prior year	40%
Clients who reported receiving the EITC in prior year	21%

### Feasibility: An Achievable Intervention

Clients served	186
Returns requiring > 1 hour to complete	36%
Returns requiring > 1 visit to complete	22%

### Acceptability: Client Views on Services



### Non-Participants: Families who Declined Services

Declined because they had already completed their 2016 tax return	62%
Would definitely or maybe use StreetCred next year	81%
Reported receiving the EITC in prior year	43%

## CONCLUSIONS & PATH FORWARD

- **StreetCred** is an effective, feasible, and acceptable service based on pilot year data. The US healthcare system is a gateway to non-medical resources positively impacting the health and economic futures of America's most vulnerable communities and children.
- **Rigorous evaluation** is needed to assess StreetCred's impact on low-income families' access to the EITC, families' interactions with their medical home, and children's health, educational, and future financial outcomes.
- **2017:** Expansion to **three new sites** around Boston. Streamlining collected tax data into applications for **other evidence-based, anti-poverty government programs** available to low-income families raising children. **Offering services earlier** in tax season.